



WCD | BAIRD CENTER

EXHIBITOR AV PRICING GUIDE

OFFICE HOURS: Monday – Friday 9am – 5pm

CONTACT: 414-908-6190 | productions@cti.com

WCD EXHIBITOR STORE

TABLE OF CONTENTS

SCREENS AND MONITORS

PRESENTATION

AUDIO

LIGHTING

CUSTOM RIGGING



Please note, this is a price guide only. All orders must be placed online through the [Exhibitor Store](#).

For custom rigging and overhead lighting options, or questions, please contact us at productions@cti.com.

SCREENS AND MONITORS



8' Fast Fold Screen and Skirt

STUMPFL MONOLYTE | Front Projection Only

*Projector NOT included.

Advanced Day Rate (31+ Days from Event Start Date) = \$157.50

Standard Day Rate (30-14 Days from Event Start Date) = \$175

Floor Day Rate (13-0 Days from Event Start Date) = \$210

**Service Charge and Tax Applicable | Each Per Day

SCREENS AND MONITORS



4k Lumen LCD Projector

Panasonic PT-TW380U | Ultra Short Throw

*Screen and AV Cart NOT included. HDMI included.

Advanced Day Rate (31+ Days from Event Start Date) = \$427.50

Standard Day Rate (30-14 Days from Event Start Date) = \$475

Floor Day Rate (13-0 Days from Event Start Date) = \$570

**Service Charge and Tax Applicable | Each Per Day

SCREENS AND MONITORS



82" 4k LED Monitor

Samsung QE82T | HDMI and USB

**CHIEF Monitor Stand NOT included. HDMI included. Exhibitors will need to supply their own Wall Mounts and Wall Mount installation.*

Advanced Day Rate (31+ Days from Event Start Date) = \$702

Standard Day Rate (30-14 Days from Event Start Date) = \$780

Floor Day Rate (13-0 Days from Event Start Date) = \$936

****Service Charge and Tax Applicable | Each Per Day**

SCREENS AND MONITORS

70" 4k LED Monitor

Samsung BE70TH | HDMI and USB

*CHIEF Monitor Stand NOT included. HDMI included.
Exhibitors will need to supply their own Wall Mounts and Wall Mount installation.



Advanced Day Rate (31+ Days from Event Start Date) = \$648

Standard Day Rate (30-14 Days from Event Start Date) = \$720

Floor Day Rate (13-0 Days from Event Start Date) = \$864

**Service Charge and Tax Applicable | Each Per Day

SCREENS AND MONITORS



50" 4k LED Monitor

Samsung BE50TH | HDMI and USB

**CHIEF Monitor Stand NOT included. HDMI included. Exhibitors will need to supply their own Wall Mounts and Wall Mount installation.*

Advanced Day Rate (31+ Days from Event Start Date) = \$270

Standard Day Rate (30-14 Days from Event Start Date) = \$300

Floor Day Rate (13-0 Days from Event Start Date) = \$360

****Service Charge and Tax Applicable | Each Per Day**

SCREENS AND MONITORS



32" 4k LED Monitor

Samsung QM32C | HDMI and USB

*CHIEF Monitor Stand NOT included. HDMI included.

Advanced Day Rate (31+ Days from Event Start Date) = \$162

Standard Day Rate (30-14 Days from Event Start Date) = \$180

Floor Day Rate (13-0 Days from Event Start Date) = \$216

**Service Charge and Tax Applicable | Each Per Day

SCREENS AND MONITORS



FLOOR MONITOR STAND

CHIEF PRSU | For 50"-82" LED Monitors

*LED Monitor NOT included. Adjustable height 4'-6'.
Please note, Mounting Hardware is reserved for these units only and are not available for Wall Mounting.

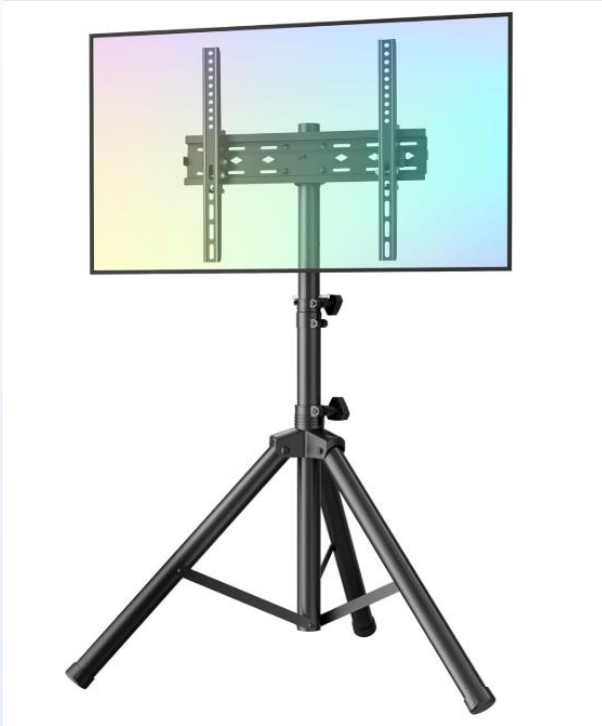
Advanced Day Rate (31+ Days from Event Start Date) = \$157.50

Standard Day Rate (30-14 Days from Event Start Date) = \$175

Floor Day Rate (13-0 Days from Event Start Date) = \$210

**Service Charge and Tax Applicable | Each Per Day

SCREENS AND MONITORS



32" MONITOR STAND

VESA TRIPOD STAND | For 32" LED Monitors

*LED Monitor NOT included. Adjustable height 3'-5'.

Advanced Day Rate (31+ Days from Event Start Date) = \$18

Standard Day Rate (30-14 Days from Event Start Date) = \$20

Floor Day Rate (13-0 Days from Event Start Date) = \$24

**Service Charge and Tax Applicable | Each Per Day

SCREENS AND MONITORS



PROJECTOR STAND AND SKIRT

SAFE LOCK | For Panasonic LCD Projector

*LCD Projector NOT included. Adjustable height 3'-5'.

Advanced Day Rate (31+ Days from Event Start Date) = \$22.50

Standard Day Rate (30-14 Days from Event Start Date) = \$25

Floor Day Rate (13-0 Days from Event Start Date) = \$30

**Service Charge and Tax Applicable | Each Per Day

SCREENS AND MONITORS



AV CART AND SKIRT

DALITE | 32", 42", OR 54" AVAILABLE

*AV NOT included.

Advanced Day Rate (31+ Days from Event Start Date) = \$27

Standard Day Rate (30-14 Days from Event Start Date) = \$30

Floor Day Rate (13-0 Days from Event Start Date) = \$36

**Service Charge and Tax Applicable | Each Per Day

SCREENS AND MONITORS



VIDEO PLAYBACK LOOP DEVICE

RASPBERRY PI5 | For Monitors without USB or Laptop

*Monitors NOT included. HDMI included.

Advanced Day Rate (31+ Days from Event Start Date) = \$67.50

Standard Day Rate (30-14 Days from Event Start Date) = \$75

Floor Day Rate (13-0 Days from Event Start Date) = \$90

**Service Charge and Tax Applicable | Each Per Day

PRESENTATION



PODIUM / LECTERN

SOUNDCRAFT | GREY CARPETED

*AV Accessories NOT included.

Advanced Day Rate (31+ Days from Event Start Date) = \$45

Standard Day Rate (30-14 Days from Event Start Date) = \$50

Floor Day Rate (13-0 Days from Event Start Date) = \$60

**Service Charge and Tax Applicable | Each Per Day

PRESENTATION



PC LAPTOP

HP & LENOVO | HDMI, USB, USB-C

*Presentation Accessories NOT included. HDMI and Microsoft Office Apps included.

Advanced Day Rate (31+ Days from Event Start Date) = \$225

Standard Day Rate (30-14 Days from Event Start Date) = \$250

Floor Day Rate (13-0 Days from Event Start Date) = \$300

**Service Charge and Tax Applicable | Each Per Day

PRESENTATION



WIRELESS ADVANCER/MOUSE

LOGI & KENSINGTON | USB

*Laptop NOT included.

Advanced Day Rate (31+ Days from Event Start Date) = \$22.50

Standard Day Rate (30-14 Days from Event Start Date) = \$25

Floor Day Rate (13-0 Days from Event Start Date) = \$30

**Service Charge and Tax Applicable | Each Per Day

PRESENTATION



LAPTOP AUDIO INTERFACE DEVICE

ROLLS DB24 | RAPCO LTI BLOX

*Laptop and Speaker Monitor NOT included. XLR included.

Advanced Day Rate (31+ Days from Event Start Date) = \$36

Standard Day Rate (30-14 Days from Event Start Date) = \$40

Floor Day Rate (13-0 Days from Event Start Date) = \$48

**Service Charge and Tax Applicable | Each Per Day

PRESENTATION



FLIPCHART

DRAPER | A-FRAME

*Paper Pad and Markers included.

Advanced Day Rate (31+ Days from Event Start Date) = \$40.50

Standard Day Rate (30-14 Days from Event Start Date) = \$45

Floor Day Rate (13-0 Days from Event Start Date) = \$54

**Service Charge and Tax Applicable | Each Per Day

PRESENTATION



EASEL

DALITE | GOLD

Advanced Day Rate (31+ Days from Event Start Date) = \$13.50

Standard Day Rate (30-14 Days from Event Start Date) = \$15

Floor Day Rate (13-0 Days from Event Start Date) = \$18

****Service Charge and Tax Applicable | Each Per Day**

AUDIO

SMALL AUDIO MIXER

SHURE SCM268 | 4 Channel Analog

*Microphone and Speaker Monitor NOT included.

Advanced Day Rate (31+ Days from Event Start Date) = \$90

Standard Day Rate (30-14 Days from Event Start Date) = \$100

Floor Day Rate (13-0 Days from Event Start Date) = \$120

**Service Charge and Tax Applicable | Each Per Day



AUDIO

SMALL AUDIO SPEAKER

QSC K10 | Powered Speaker

*Speaker Stand NOT included. XLR included.

Advanced Day Rate (31+ Days from Event Start Date) = \$90

Standard Day Rate (30-14 Days from Event Start Date) = \$100

Floor Day Rate (13-0 Days from Event Start Date)
= \$120

**Service Charge and Tax Applicable | Each Per Day



AUDIO

SPEAKER STAND

ULTIMATE UTS | For QSC K10

*QSC Speaker NOT included. Black Stretch Cover include.

Advanced Day Rate (31+ Days from Event Start Date) = \$18

Standard Day Rate (30-14 Days from Event Start Date) = \$20

Floor Day Rate (13-0 Days from Event Start Date) = \$24

**Service Charge and Tax Applicable | Each Per Day



AUDIO

SINGLE WIRELESS MICROPHONE KIT

SHURE SLXD | Beta 58 Hand-Held or LAV

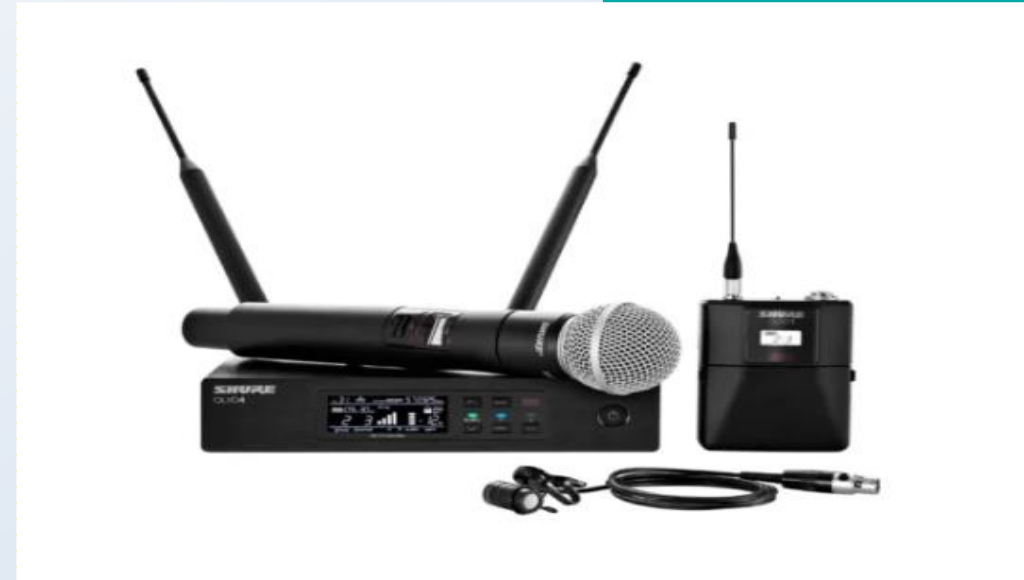
*Audio Mixer and Speaker NOT included. XLR and Batteries included.

Advanced Day Rate (31+ Days from Event Start Date) = \$139.50

Standard Day Rate (30-14 Days from Event Start Date) = \$155

Floor Day Rate (13-0 Days from Event Start Date) = \$186

**Service Charge and Tax Applicable | Each Per Day



AUDIO

WIRED MICROPHONE | ON/OFF SWITCH

SHURE SM48S | Beta 58 Hand-Held

*Audio Mixer and Speaker NOT included. XLR included.

Advanced Day Rate (31+ Days from Event Start Date) = \$112.50

Standard Day Rate (30-14 Days from Event Start Date) = \$125

Floor Day Rate (13-0 Days from Event Start Date) = \$150

**Service Charge and Tax Applicable | Each Per Day



LIGHTING



WIRELESS LED RGB LIGHT FIXTURE

BLIZZARD SKYBOX | 10 Hour Battery Life

*This fixture is intended for ground placement only and is not an overhead light.

Advanced Day Rate (31+ Days from Event Start Date) = \$67.50

Standard Day Rate (30-14 Days from Event Start Date) = \$75

Floor Day Rate (13-0 Days from Event Start Date) = \$90

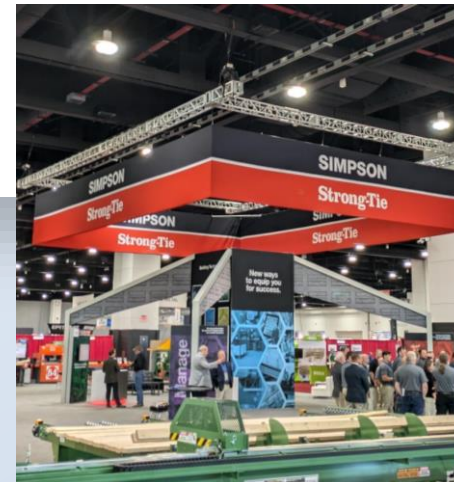
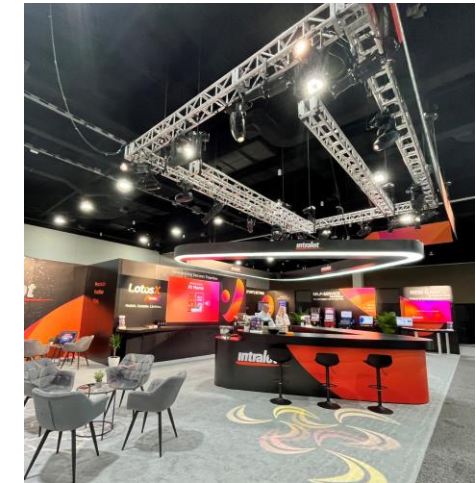
**Service Charge and Tax Applicable | Each Per Day

CUSTOM RIGGING

Please contact a CTI Representative directly for any specialized Rigging that may exceed *150 lbs* and/or require 3 or more rig points.

CTI offers CM Chain Hoist Motors, Trussing, and a variety of Lighting Fixtures on-site.

Custom Rigging orders will require a detailed overhead CAD diagram of your booth and product placement.





To explore more

VISIT CTI.COM

